



VISIONIX
The Vision of the Future

L.P.O.
Latham & Phillips Ophthalmic
800-755-5919

VX 120
Diagnostic

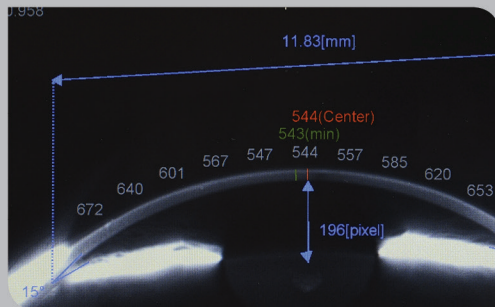
All Inclusive Diagnostic Device

VX120

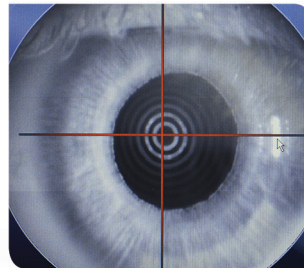
The newest diagnostic tool: First combined all-in-one device
 (Refraction - Keratometry - Aberrometry - Topography - Pupillometry -
 Tonometry - Anterior chamber analysis) with fully automated measurement.

SURGERY

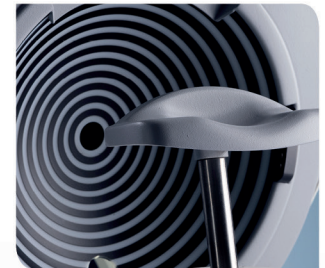
- > Cataract surgery IOL selection, Internal spherical aberration, pupil center determination
- > Refractive surgery Follow-up...



Scheimpflug imaging, anterior segment analysis
 Corneal thickness measurement, iridocorneal angle



Pupillometry, photopic and scotopic results



Proven technology

GLAUCOMA DIAGNOSIS

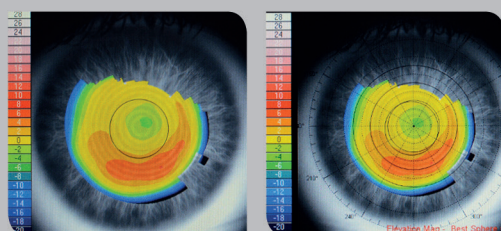
- > Full automated non-contact tonometer
 Soft air puff



VX120 patient side

CORNEAL STUDY

- > Corneal pathology (keratoconus)
- > Contact lens fitting



Contact lens software included

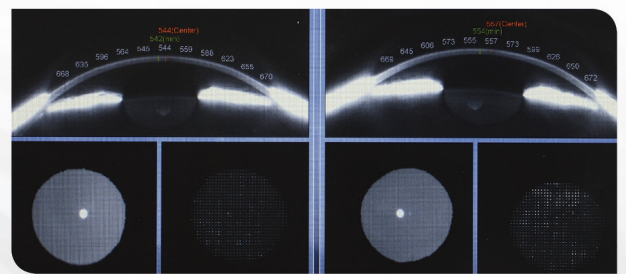


Full automated topographer, placido rings technology



GLOBAL OPTICS DIAGNOSTIC

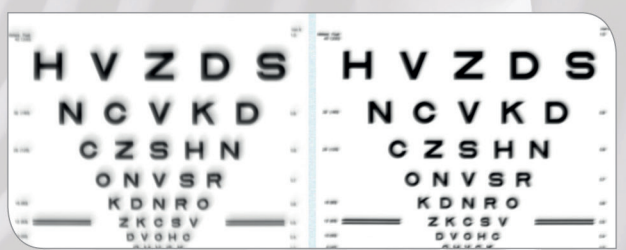
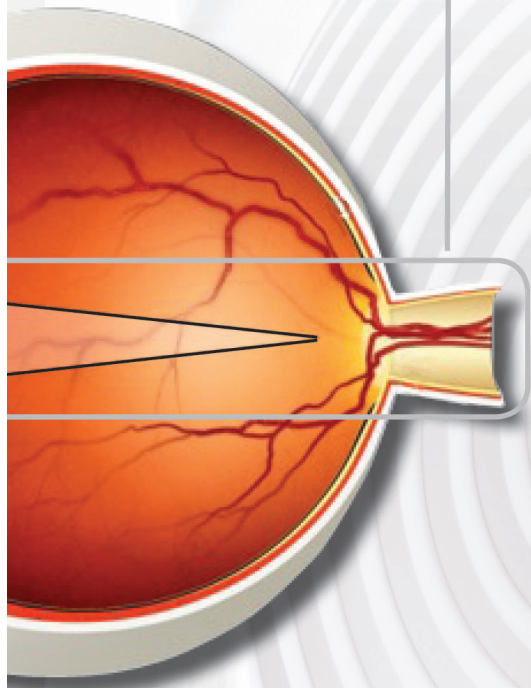
- > Cataract detection
- > Opacity analysis
- > Easy global screening



Cataract level analysis

REFRACTION AND VISUAL PERFORMANCE

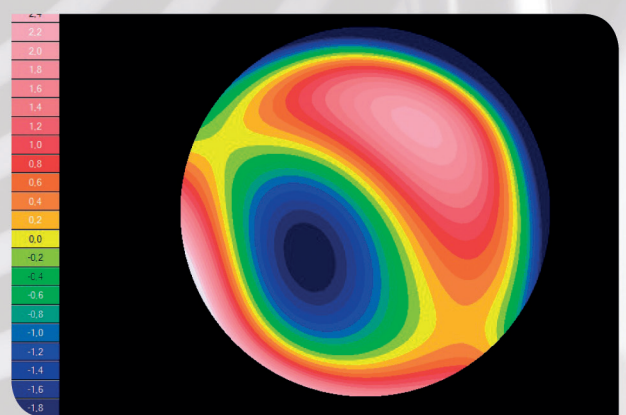
- > Day and night Vision
- > Internal, external and total aberrometry



Visual acuity simulations



Full automated aberrometer PSF and Zernike analysis



Wavefront maps...

Complete diagnostic tool for your practice

COMPLETELY AUTOMATIC

- Fully automatic 3-D and R/L eye alignments
- 7 types of automatic simultaneous measurements
- Operator independent measurements
- High reproducibility of measurements.

ULTRA EFFICIENT 3-D ALIGNMENT

Entirely automatic alignment and measurement allowing:

- Higher reliability of measurements
- Significant time saving
- Ergonomic design provides optimum comfort.

Technical specifications

General	
Dimensions	W 320 mm x D 555 mm W 12.6 in D 21.8 in
Weight	27 kg 59.5 lbs
Working distance	91 mm
Alignment	XYZ automatic
Display	TFT Screen 10.1" (1024 x 600) Multitouch screen
Observation area	ø 14 mm
Printer	Built-in BW - External colour available
Supply voltage	100/120, 220/240 V AC, 50/60 Hz, 250 W
Medical Directive	CE MDD 93/42/EC amended by 2007/47/EC
Output	RS232 / USB / VGA / LAN

AR & power mapping (Wavefront)

Spherical power range	-20D to + 20D
Cylinder power range	0D to + 8D
Axis	0 to 180°
Measuring area	Min. ø 2.0 mm - Max. 7.0 mm (3 areas)
Number of measuring points	1500 points
Acquisition time	0.2 sec
Method	Shack-Hartmann

Pachymetry, IC angle and pupillometry

Method	Scheimpflug
Pachymeter Range	150-1300 µm
Pachy Resolution	+/- 1 micron
IC angle range	0°-60°
IC Resolution	0.1°
Pupil Illumination	Blue light 455 nm
Retro illumination	

Product's video:

<http://www.visionix-vx120.com>



Corneal topography

Number of rings	24
Number of measuring points	6 144
Number of analysed points	More than 100 000
Diameter of covered corneal area at 43D	From 0.33 mm to more than 10 mm
Diopters measured field	From 1 to 100
Repeatability	0.02 D
Method	Placido rings

Tonometer

Measurement range	1 mmHg to 50 mmHg
-------------------	-------------------

